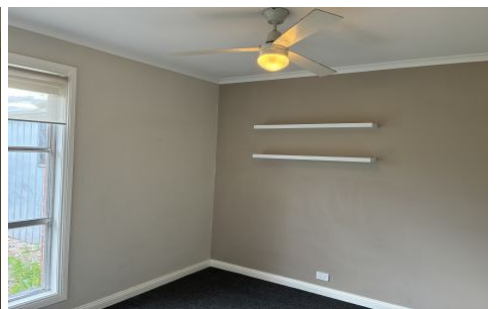




LATROBE VALLEY
REAL ESTATE



19 Hawthorn Crescent Churchill VIC

3 1 2

*** Applications Required Prior to Inspections***

This charming Churchill home blends country charm with modern comfort, offering a peaceful lifestyle in a quiet, friendly neighborhood. With spacious interiors, great outdoor features, and excellent convenience, it's ideal for anyone seeking comfort and practicality.

Country?style character - Warm, inviting atmosphere with natural light and homely finishes throughout

Master bedroom with double?shower ensuite - A private retreat featuring a spacious, modern ensuite

Large shed - Perfect for storage, hobbies, tools, or a

[For full version visit the website](https://www.lvrealstate.com.au)

Type : House
Price : \$460 pw
View : <https://www.lvrealstate.com.au/lease/vic/gippsland/churchill/residential/house/8697863>



Latrobe Valley Real Estate
03 5176 5544

<https://www.lvrealstate.com.au>