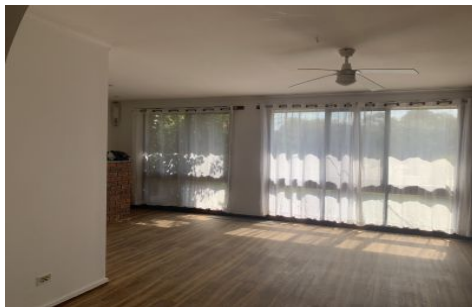




**LATROBE VALLEY**  
REAL ESTATE



**9 Rangeview Drive Traralgon VIC**

3 2 2

**\*\* WE REQUIRE APPLICATIONS PRIOR TO INSPECTION \*\***

3 bedroom all with robes

New flooring throughout.

Two separate living areas.

Modern kitchen with plenty of storage.

Great size bathroom and ensuite.

Double carport plus lock up brick workshop.

**Type** : House

**View** : <https://www.lvrealstate.com.au/lease/vic/gippsland/traralgon/residential/house/8317957>



**Rachel Mustoe**  
**03 5176 5544**

[For full version visit the website](https://www.lvrealstate.com.au)

<https://www.lvrealstate.com.au>