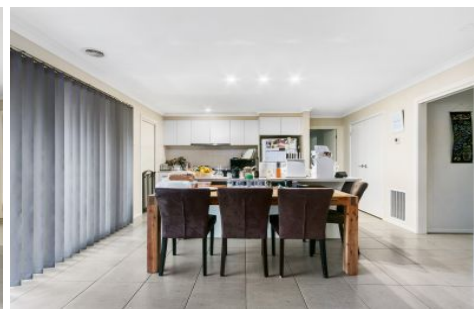




**LATROBE VALLEY**  
REAL ESTATE



### 1-2/41 Langford Street Moe VIC

3 2 2

Presenting two modern brick townhouses, perfectly designed for comfortable living and situated close to essential amenities. These stylish properties offer a blend of luxury and practicality, making them ideal for families and investors.

**Type** : Townhouse

**Price** : \$460,000 per townhouse

**View** : <https://www.lvrealestate.com.au/sale/vic/gippsland/moe/residential/townhouse/8077609>

#### Key Features:

Spacious kitchen, dining, and lounge area for seamless living and entertaining.  
The kitchen features a big island bench, 900mm gas stove, dishwasher, and a walk-in pantry.

Split system air conditioning and ducted heating for year-round comfort.

[For full version visit the website](https://www.lvrealestate.com.au)



**Ryan Hobson**  
03 5176 5544



