



LATROBE VALLEY
REAL ESTATE



22 Widdis Way Flynn VIC

4 2 2

This is a truly extraordinary living experience nestled on an approximate 2000 square meter block. Prepare to be captivated by every corner and curve of this stunning property, where luxury meets functionality and entertainment blends seamlessly with comfort.

Step into the inviting lounge area featuring a cosy wood fireplace, perfect for gathering with friends and family on chilly evenings. The sleek bar adds a touch of sophistication, creating the ideal setting for family and friends.

The modern kitchen with all black finishes is equipped with modern gas cooking facilities and a generously sized walk-in pantry.

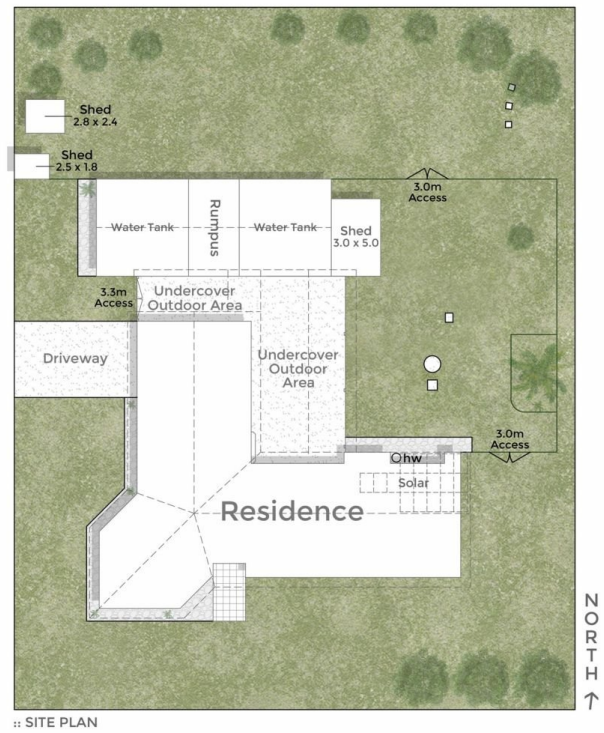
Immerse yourself in Flynn's best cinematic experience

Price : \$799,000
Land Size : 1996 sqm
View : <https://www.lvrealestate.com.au/sale/vic/gippsland/flynn/residential/house/7962351>



Ryan Hobson
03 5176 5544

<https://www.lvrealestate.com.au>



22 Widdis Way, FLYNN

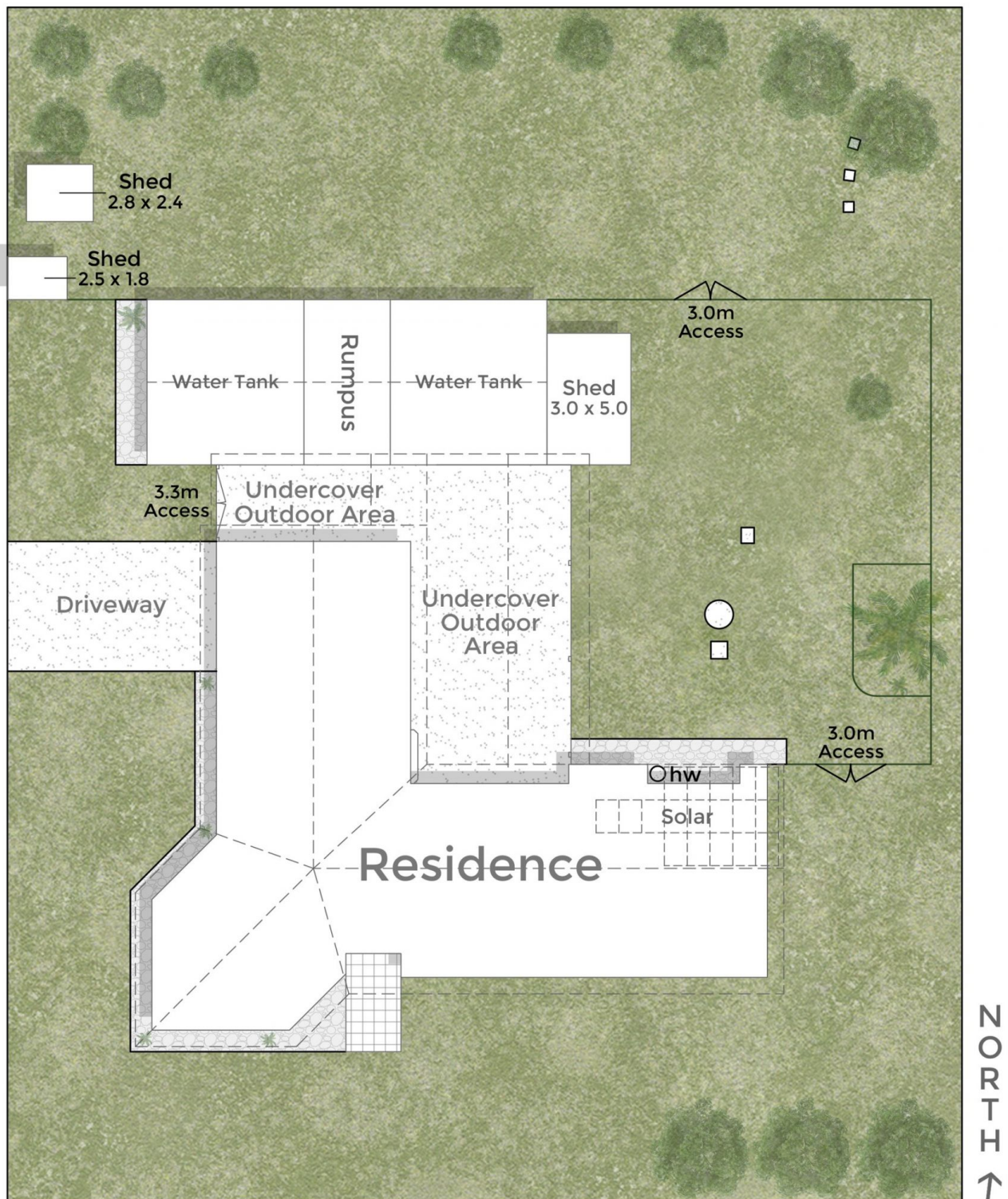
4 Bed 2 Bath 2 Living 2 Car+Off Street



The above plan is an artist's impression only. It includes elements that are for display purposes only and may not be to scale. Landscaping shown is indicative only. All measurements are approximate & individuals should rely on their own information.

PLATINUMMEDIA
REAL ESTATE MARKETING

22 WIDDIS WAY, FLYNN



:: SITE PLAN

THE ABOVE PLAN IS AN ARTIST'S IMPRESSION ONLY, IT INCLUDES ELEMENTS THAT ARE FOR DISPLAY PURPOSES ONLY AND MAY NOT BE TO SCALE. LANDSCAPING SHOWN IS INDICATIVE ONLY. DIMENSIONS ARE APPROXIMATE.