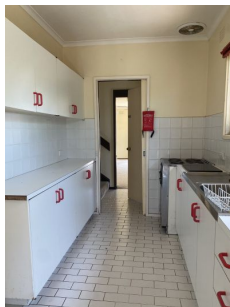




LATROBE VALLEY
REAL ESTATE



6 Bowden Court Traralgon VIC

**** WE REQUIRE APPLICATIONS PRIOR TO INSPECTIONS ****

Loungeroom has carpet, gas heater and great size
Bedroom 1 has carpet, 3 x mirrored robe
Bedroom 2 has carpet, 2 x door robe
Bedroom 3, floorboards, 2 x robe
Bathroom - shower, bath, single basin
Separate toilet
Kitchen has electric cooking, lots of cupboards
Dining Area has lino and ceiling fan
Double garage
Great Size yard

3 1 2

View : <https://www.lvrealestate.com.au/lease/vic/gippsland/traralgon/residential/house/7453153>



Rachel Mustoe
03 5176 5544