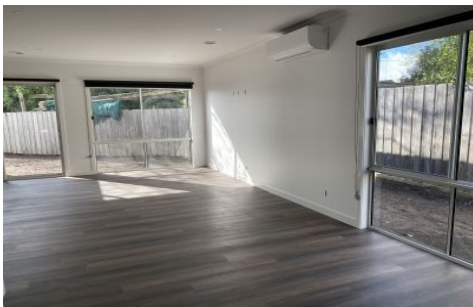




LATROBE VALLEY
REAL ESTATE



3B Alamein Court Traralgon VIC

3 2 2

**** WE REQUIRE APPLICATIONS PRIOR TO INSPECTIONS ****

This lovely 3 bedroom home is only 1 year old. Featuring floorboards throughout, open living and kitchen with gas appliances, dishwasher and plenty of storage. Main bedroom has WIR and ensuite, bedroom 2 & 3 have 3 door BIR, blinds and carpet. Bathroom has shower and bath with a separate toilet and great sized laundry. Enclosed yard, double garage, close to schools and in the much sort after West end location.

View : <https://www.lvrealestate.com.au/lease/vic/gippsland/traralgon/residential/house/7152100>



Rachel Mustoe
03 5176 5544