



**LATROBE VALLEY**  
REAL ESTATE



### 11 Cherry Crescent Morwell VIC

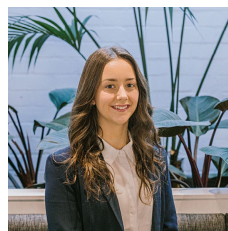
4 1 2

Much loved brick family home owned and lived in by its original owner.  
Situating in a well established area, close to Midvalley Shopping Centre.

Features include;  
Spacious kitchen, dining and living  
Updated gas cooking  
Updated gas heating  
BIR's to 3 bedrooms  
Roller shutters  
Single remote garage  
Single carport  
Garden shed  
Established gardens  
Spacious front and back yard  
Roof replaced in recent years

**Land Size** : 752 sqm

**View** : <https://www.lvrealstate.com.au/sale/vic/gippsland/morwell/residential/house/6677758>



**Ebony Ricardo**  
**03 5176 5544**

