



16 Walton Street Rosedale VIC

3 1

This great 3-bedroom home is only a 5-minute walk to all Rosedale has to offer, primary school, kinder, great cafes and the Vline train station into Melbourne.

Neat as a pin and situated on a huge block of approximately 920 square metres this property is priced to sell in the very strong regional market.

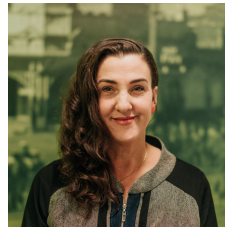
A great foot in the door to our every popular little town of Rosedale where your mortgage repayment would be cheaper than renting.

Excellent rental return for an investor of approximately \$320 a week return.

Viewing is a must.

Land Size : 928 sqm

View : <https://www.lvrealestate.com.au/sale/vic/gippsland/rosedale/residential/house/6498807>



Fleur Speed
0439 765 545