



**31 Bridgewater Drive Morwell VIC**

2 1 1

An ideal investment with a 5.6% Rental Return!

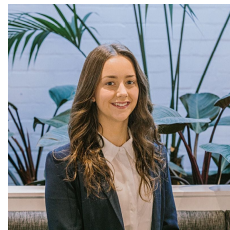
This simple low maintenance brick unit is perfect for the portfolio.

Easily accessible for all needs and just a short walk to Midvalley shopping centre.

- Features include;
- Neat and tidy throughout
- Modern kitchen
- Spacious living area
- Cathedral ceilings
- 2 Bedrooms
- WIR and semi ensuite to main
- BIR to second bedroom
- Gas heating and cooktop
- Split system
- Ceiling fan in lounge

**Land Size** : 152 sqm

**View** : <https://www.lvrealstate.com.au/sale/vic/gippsland/morwell/residential/unit/6496669>



**Ebony Ricardo**  
03 5176 5544

