



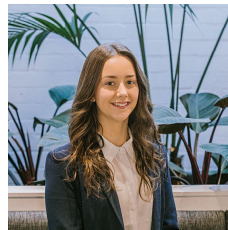
2 Bridgewater Drive Morwell VIC

2 1 2

This simple low maintenance brick unit is perfect for the portfolio, easily accessible for all needs and just a short walk to Midvalley shopping centre, with a great rental return!

Land Size : 169 sqm
View : <https://www.lvrealstate.com.au/sale/vic/gippsland/morwell/residential/unit/6496614>

- Features include;
- Neat and tidy throughout
- Spacious living area
- Cathedral ceilings
- 2 Bedrooms
- WIR and semi ensuite to main
- BIR to second bedroom
- Gas heating and cooktop
- Split system
- Separate bath & shower
- Double carport
- Undercover low maintenance backyard



Ebony Ricardo
03 5176 5544

