



LATROBE VALLEY
REAL ESTATE



51 Duke Street Rosedale VIC

3 1 3

Latrobe Valley Real Estate offer this home in a fantastic position only 5-minute walk from everything Rosedale has to offer including primary school, shops, public transport and some yummy cafes.

Rosedale is becoming ever more popular for young families due to its village feel, friendly community and proximity to Sale and Traralgon.

The property is situated on a huge block with ample shedding and plenty of room to renovate and grow.

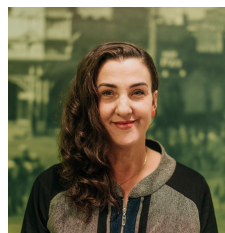
The home itself has 3 bedrooms and a warm cosy feel that with a few updates and love would make a great first home or investment property.

It has great solid foundations and located in a fantastic position on Duke Street.

Viewing a must in this strong market.

Land Size : 775 sqm

View : <https://www.lvrealestate.com.au/sale/vic/gippsland/rosedale/residential/house/6492572>



Fleur Speed
0439 765 545